

PARTS & INSTALLATION INSTRUCTIONS

EZ-FLOW 10.75 Cubic Ft. SPREADER

PARTS LIST

| Item | Part No. | Qty. | Description | Item | Part No. | Qty. | Description |
|------|----------|------|---------------------------------------|------|----------|------|--|
| | 37010 | 1 | 10.75 SPREADER COMPLETE | 27 | 22218 | 4 | • 14-20 x 3/4" Socket Head |
| 1 | 37210 | 1 | • Main Frame | 28 | 22219 | 4 | • Bolt, Pan HD Ph. Stainless, 5/16-18 x 1" |
| 2 | 37201 | 1 | • Hopper | 29 | 20304 | 8 | • Locknut, 5/16" |
| 3 | 37202 | 1 | • Hopper Cover | 30 | 20049 | 6 | • Hex Bolt, 3/8-16 x 1" |
| 4 | 37203 | 2 | • Flexible Draw Latch | 31 | 20305 | 6 | • Locknut, 3/8" |
| 5 | 37208 | 1 | • Deflector | 32 | 20093 | 4 | • Hex Bolt, 1/2-13 x 1" |
| 6 | 37217 | 1 | • Throat Clamp | 33 | 20307 | 4 | • Locknut, 1/2" |
| 7 | 37216 | 1 | Spinner Guard | 34 | 20313 | 2 | • Hex Nut, 5/16" |
| 8 | 37247 | 1 | • Drive Assembly | 35 | 20326 | 2 | • Lockwasher, 5/16" |
| 9 | 37209 | 1 | • Drive Enclosure | 36 | 20027 | 8 | • Hex Bolt, 5/16-18 x 1" |
| 10 | 37211 | 1 | • Drive Mount | 37 | 20352 | 4 | • Flatwasher, 5/16" |
| 11 | 37205 | 1 | • Transmission | | 37236 | 1 | • Hinge Mount |
| 12 | 37204 | 1 | • Motor 12 Volt DC | | 36244 | 1 | • Speed Control Assembly |
| 13 | 37207 | 1 | • Motor Cover | 38 | | 1 | • Speed Control |
| 14 | 37212 | 1 | • Spinner | 39 | | 1 | • Mounting Bracket |
| 15 | 37213 | 1 | • Auger | 40 | | 2 | • Machine Screw, Rd Hd 8-32 x 1" |
| 16 | 37214 | 1 | • Oil Seal | 41 | | 4 | • Flatwasher #8 |
| 17 | 37245 | 1 | • Power Cable 42" | 42 | | 2 | • Hex Nut 8-32 |
| 18 | 37215 | 1 | • Cord Restraint | | 37246 | 1 | • Carton - Miscellaneous Parts |
| 19 | 22212 | 1 | • Set Screw Stainless, 5/16-18 x 3/8" | 43 | 36240 | 1 | • Socket Assy. w/Mtg. Plate |
| 20 | 22213 | 1 | • Set Screw Stainless, 1/4-20 x 3/4" | 44 | 36248 | 1 | • Dummy Plug |
| 21 | 22214 | 4 | • Hex Bolt Stainless, 1/4-20 x 3/4" | 45 | 36242 | 1 | • Wire, Red, 22" |
| 22 | 22215 | 4 | • Hex Nut Stainless, 1/4-20 | 46 | 36229 | 1 | • Wire, Blue 36" |
| 23 | 22216 | 2 | • Cap Screw, #10-32 x 5/8" | 47 | 36247 | 1 | • Wire, Red, 96" |
| 24 | 20323 | 2 | • Lockwasher, #10 | | 08711 | 1 | • HARDWARE BAG |
| 25 | 37218 | 6 | • Aluminum Rivet, 3/16" | 48 | 20835 | 2 | • Screw-Rd. Hd.8-32 x 1" |
| 26 | 22217 | 4 | • Lockwasher Stainless, 1/4" | 49 | 20843 | 2 | • Locknut 8 - 32 |

Parts indented are included in the carton, bag or assembly under which they are indented.

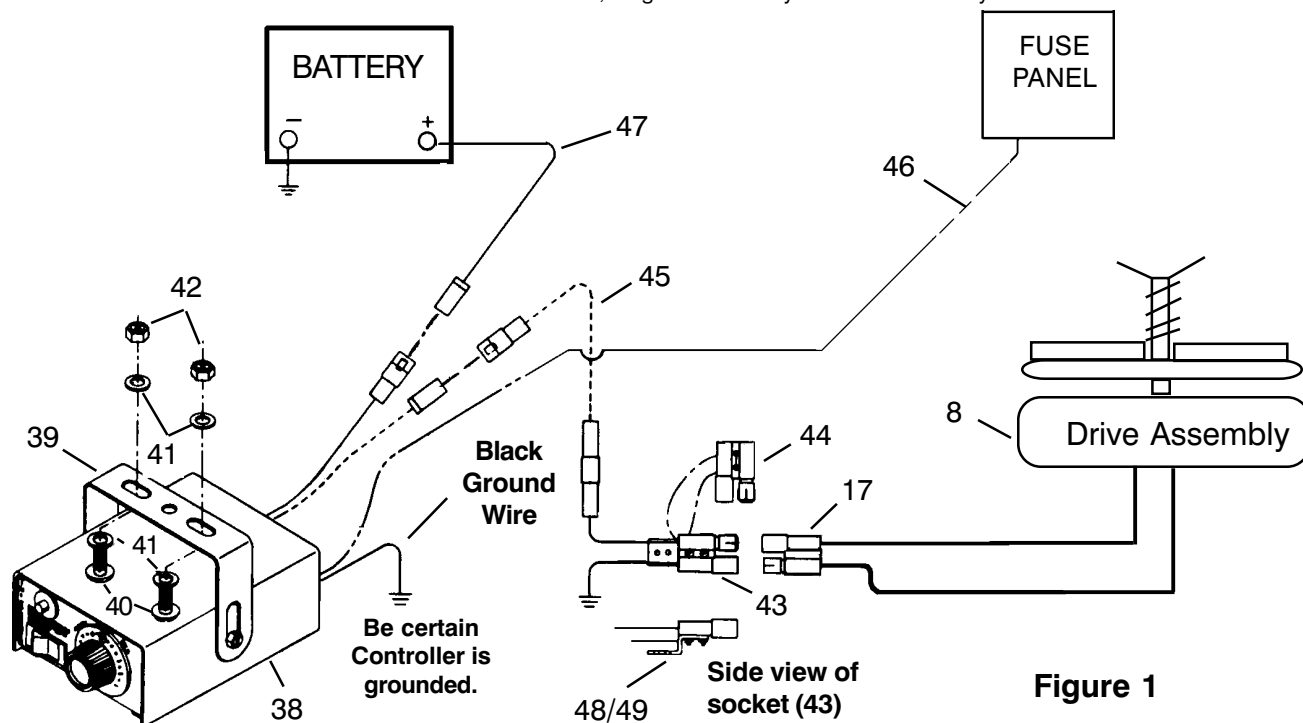


Figure 1

Meyer Products reserves the right, under its continuing product improvement program, to change construction or design details, specifications and prices without notice or without incurring any obligation.

www.meyerproducts.com • E-Mail info@meyerproducts.com

GENERAL INFORMATION

CAUTION: Always disconnect battery before beginning installation.

Check contents against the parts list to determine all are correct and included, and also to familiarize yourself with them.

Locknuts are furnished. **DO NOT tighten bolts and nuts until** installation is complete (unless otherwise specified), then be sure to tighten all attaching parts per specified torque chart.

When ordering parts, furnish Part No., Name and Description.

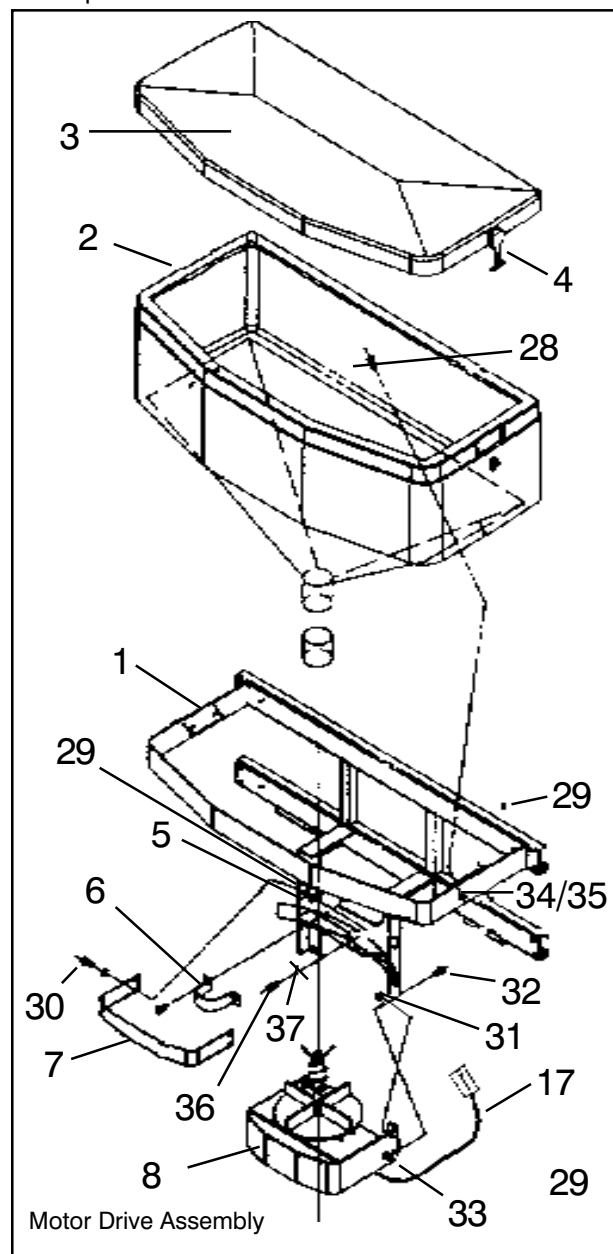


Figure 2

INSTALLATION INSTRUCTIONS

NOTE: For the best installation, we recommend that the vehicle be equipped with a step bumper or a drawbar. Relocate license plate holder and lights if blocked by any part of the Spreader.

During installation where metal touches metal, a gasket should be used to help prevent any possible paint damage to the vehicle.

A. Assemble Hinge mounting per separate instructions.
See Form 1-

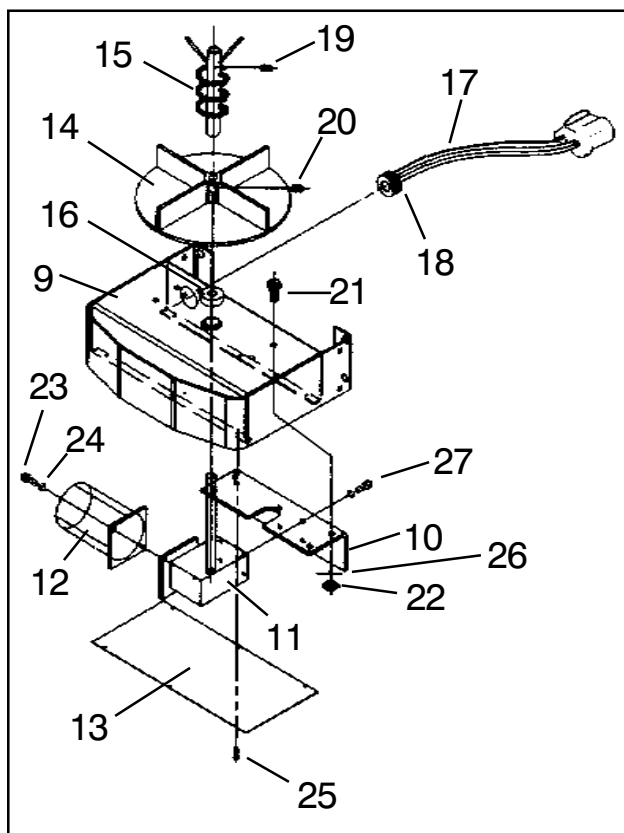


Figure 3

- B. If routing wire underbody to the rear of the chassis, it is recommended to route the wire to the inside of vehicle frame rail. Secure the wire to the frame or OEM harness with appropriate strapping or fasteners.

CAUTION: Some vehicles are designed to operate with exhaust temperatures as high as 1800 ° F. This can easily damage any wires which are routed too closely or allowed to come in contact with any portion of the exhaust system. Be certain all wires are securely installed away from the exhaust system.

C. ELECTRICAL INSTALLATION Refer to Figure 1.

1. Choose a location for the speed control (38) that is convenient for the driver, noting whether mounting bracket will be attached to the top or bottom of speed control (38). Attach mounting bracket (39) to vehicle using Round Head Machine Screws (40), flatwashers (41), and hexnut (42). Make certain speed control (38) is grounded by attaching ground wire to a good vehicle ground.
2. Route the blue wire (46) from the speed control location to the vehicle fuse panel and attach to a switched terminal on the panel. This terminal must only be "hot" when the ignition switch is "on." **DO NOT** attach blue wire to speed control at this time.
3. Attach the eyelet end of the 96" red wire (47) to the positive terminal of the battery and route the plug end to the location of the speed control. **DO NOT attach to** speed control at this time.
4. Take the 222" red wire (45) and route the large rubber plug end to the rear of the truck, securely tying to vehicle frame. Be certain wire is clear of any sharp or moving objects or the vehicle's exhaust system.
5. Attach the socket (43) to vehicle bumper or other solid mounting point using #8-32 x 1" screws (48) and #8-32 locknuts (49). Be certain the motor leads will not be strained when the plug (16) is attached. Plug the 222" red wire (45) into the socket. Secure black wire from socket to a good grounding point on vehicle frame. Clean all rust or undercoating from this area.
6. **Note: When spreader is removed, protect the socket (43) using dummy plug (44).**

| TORQUE CHART | |
|-----------------|------------------|
| Bolt - Nut Size | Torque Ft. Lbs.) |
| 1/4 - 20 | 6.0 |
| 5/16 - 18 | 11.0 |
| 3/8 - 16 | 20.0 |

D. OPERATION OF MINI SPREADER

Caution: Sweep area clear of foreign objects or obstacles that could cause personal injury. Keep other persons, children, or animals out of the area to be spread.

1. Fill Hopper with #1 Rock Salt or Calcium Chloride from bags. **Do not use bulk material. Material must be free flowing.** **Note :** When spreading Calcium Chloride or a fine material, it is recommended that the **optional Feed Gate Control** be used. To help loosen moist material there is also an optional vibrator kit. **Caution : Do not overload the vehicle,** Check weights of material and comply with the manufacturer's maximum gross vehicle weight ratings.

CAUTION: When filling Hopper, make certain there are no large objects contained in the material which could cause the Auger Spinner to bind and stop operation of the Spreader Motor. If this should happen, the circuit breaker becomes overloaded and will automatically break the circuit. Allow the Motor to cool and clear the Auger before pushing the reset button.

2. It is recommended to check for free rotation of the Auger Spinner before operating the Spreader due to possible buildup of material between the Auger and neck of the Hopper.

E. MAINTENANCE INSTRUCTIONS

Maintenance requirements for the Spreader during the winter season are relatively simple. Periodically inspect for loose bolts and nuts. Inspect for improper ground, broken wires, frayed or cracked wire insulation. Replace as necessary.

To keep maintenance to a minimum, the following cautions are suggested:

1. Do not attempt to clear Auger or Spinner or to perform any other maintenance or repair work on this Spreader unless the ignition switch is in the "OFF" position.
2. Salt must be loose and free from lumps and must be kept dry.
3. Empty Hopper after each use and hose the Spreader off.
4. When the Spreader is no longer being used, remove it from the tailgate. Remove any rust or corrosion from the metal parts, then prime the paint. It is recommended to detach #45 wire to prevent activation when not required. Store Spreader in a suitable location and attach dummy plug (44) to socket (43) to protect from corrosion.