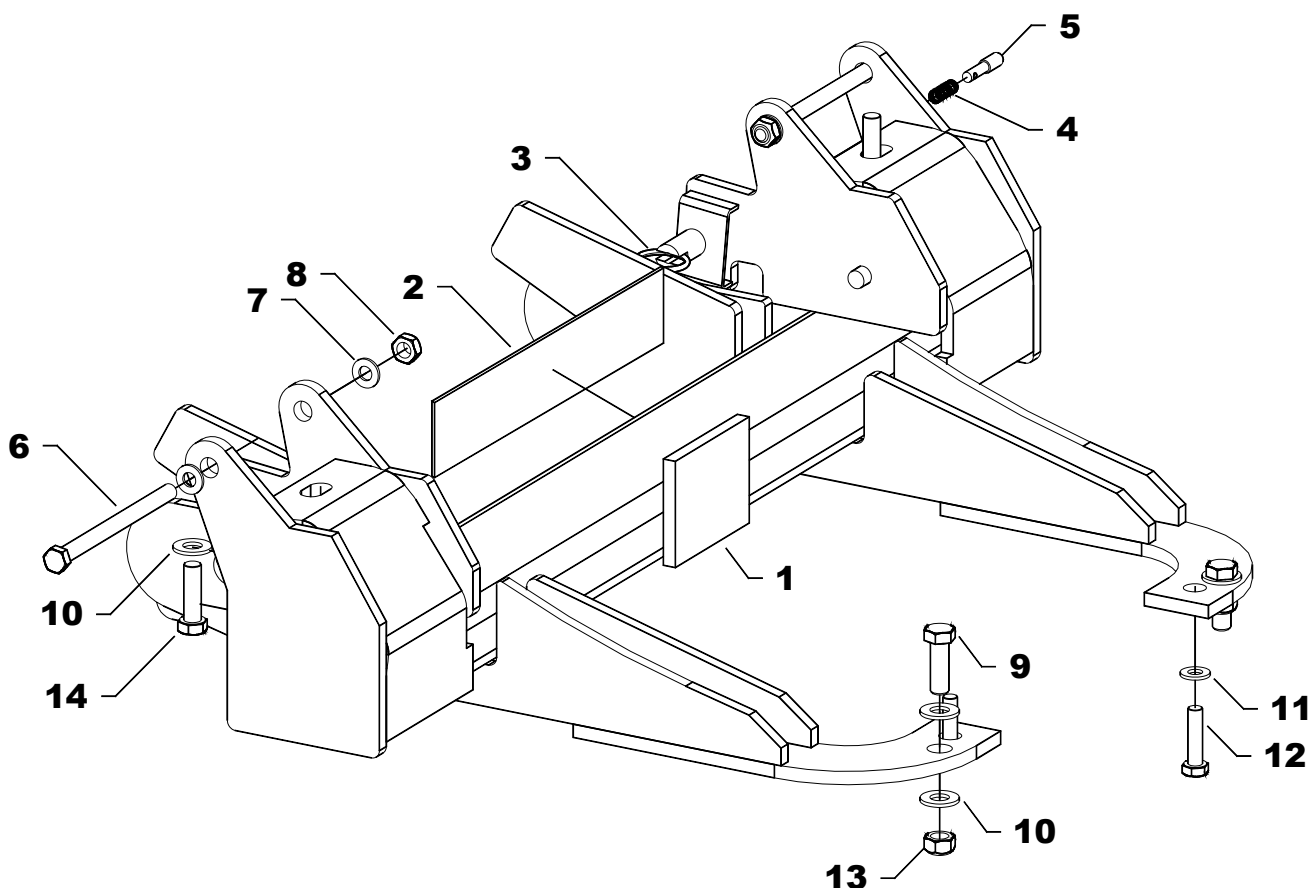


## UNDERCARRIAGE PARTS



REF	PN	QTY	DESCRIPTION	NOTES
-	30087	1	Asm, Undercarriage	INCLUDES 1-14
-	61194	1	Kit, Hardware UC	INCLUDES 6-14
1	30072	1	Weldment, Push Beam 2 X 4 X 35.75	
2	63162	1	Decal, Push Beam 1-1/2" x 6-1/2"	
3	61309	2	Ring, Standard Split, 1.48" O.D	
4	61000	2	Spring, Draw Latch Lock Pin	
5	40079	2	Pin, 3/8" DIA. x 1-3/4" SS	
6	61249	2	Screw, 7/16-14 x 6" HHCS Gr8 YZ	
7	61162	4	Washer, 7/16" SAE Hardened	
8	61154	2	Nut, 7/16" Top Lock Z	
9	61055	2	Screw, 1/2-13 x 1-1/2 HHCS Gr8 YZ	
10	61026	6	Washer, 1/2" SAE Hardened	
11	61016	2	Washer, 3/8" SAE Hardened	
12	61250	2	Screw, M10-1.5 x 40 HHCS Gr8.8 Z	
13	61020	2	Nut, 1/2-13 Top Lock Z	
14	61069	2	Screw, M12-1.75 x 40 HHCS Gr8.8 Z	

Note: The reference numbers listed identify parts shown in the illustration above. These numbers are specific to this illustration only. Always review the part number given for proper component identification. Blizzard Corporation reserves the right, under its Continuous Improvement Policy, to change construction or design details and furnish equipment when so altered without reference to illustrations or specifications.